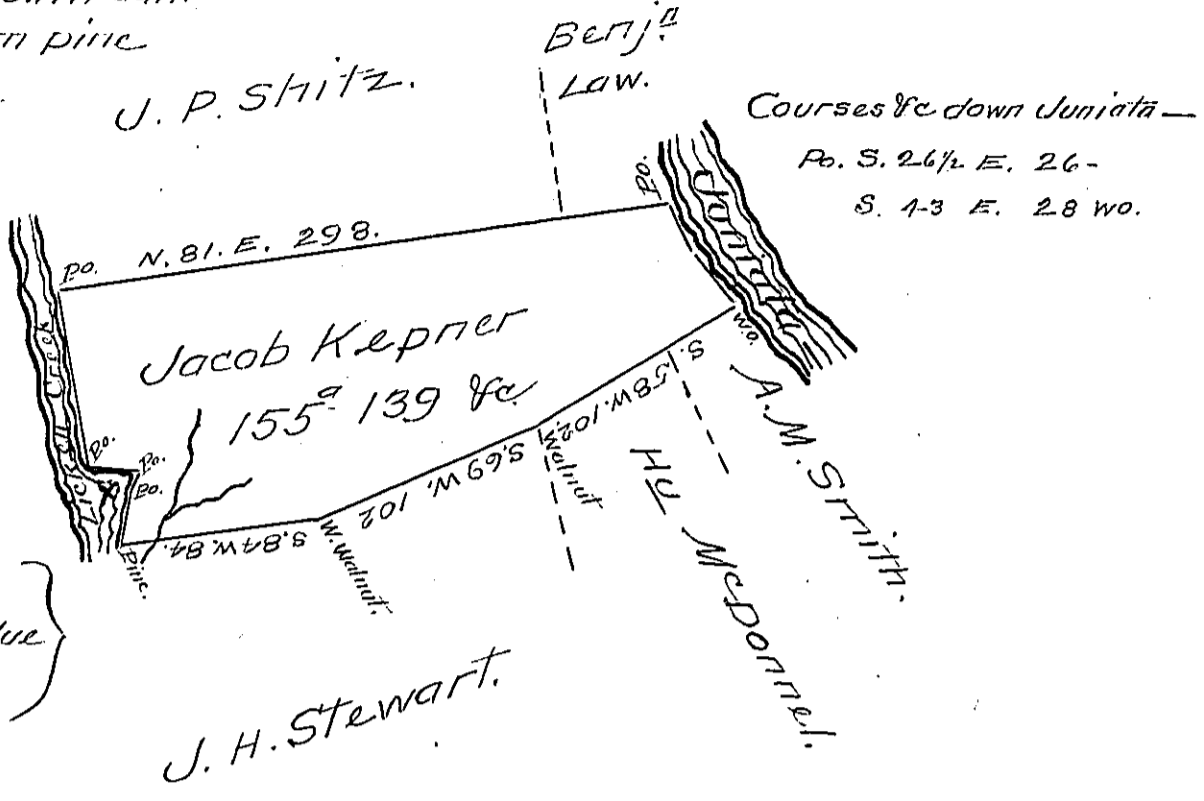


Courses and distances up
Licken Creek and on Mill dam
of J. H. Stewart from pine

- N. 13 W. 22 1/2 po.
- N. 13 E. 8 po.
- S. 81 W. 22 1/2 po
- N. 26 W. 71. po.



X Milldam of John
H. Stewart and residue
of tract

Draught of one hundred and fifty five acres and
one hundred and thirty nine perches of land with
6 p^ct. Situate in Milford Township Juniata Coun-
ty p^t. of 158^o-43 &c. Surveyed 24th Nov^r. 1764 by vir-
tue of a warrant to John McClelland dated 3rd
June 1762 and the above resurveyed & divided
for Jacob Kepner 2nd Nov^r. 1838

P. W^m. McAlister D.S.

IN TESTIMONY that the above is a copy of the original remaining on file in
the Department of Internal Affairs of Pennsylvania, made
conformably to an Act of Assembly approved the 16th day of
February, 1833, I have hereunto set my Hand and caused
the Seal of said Department to be affixed at Harrisburg,
this 17th day of February 1906.

Loan B. Brown
Secretary of Internal Affairs.